



# Proposed Attendance Boundary Change Quest to Viera Elementary

NTARY



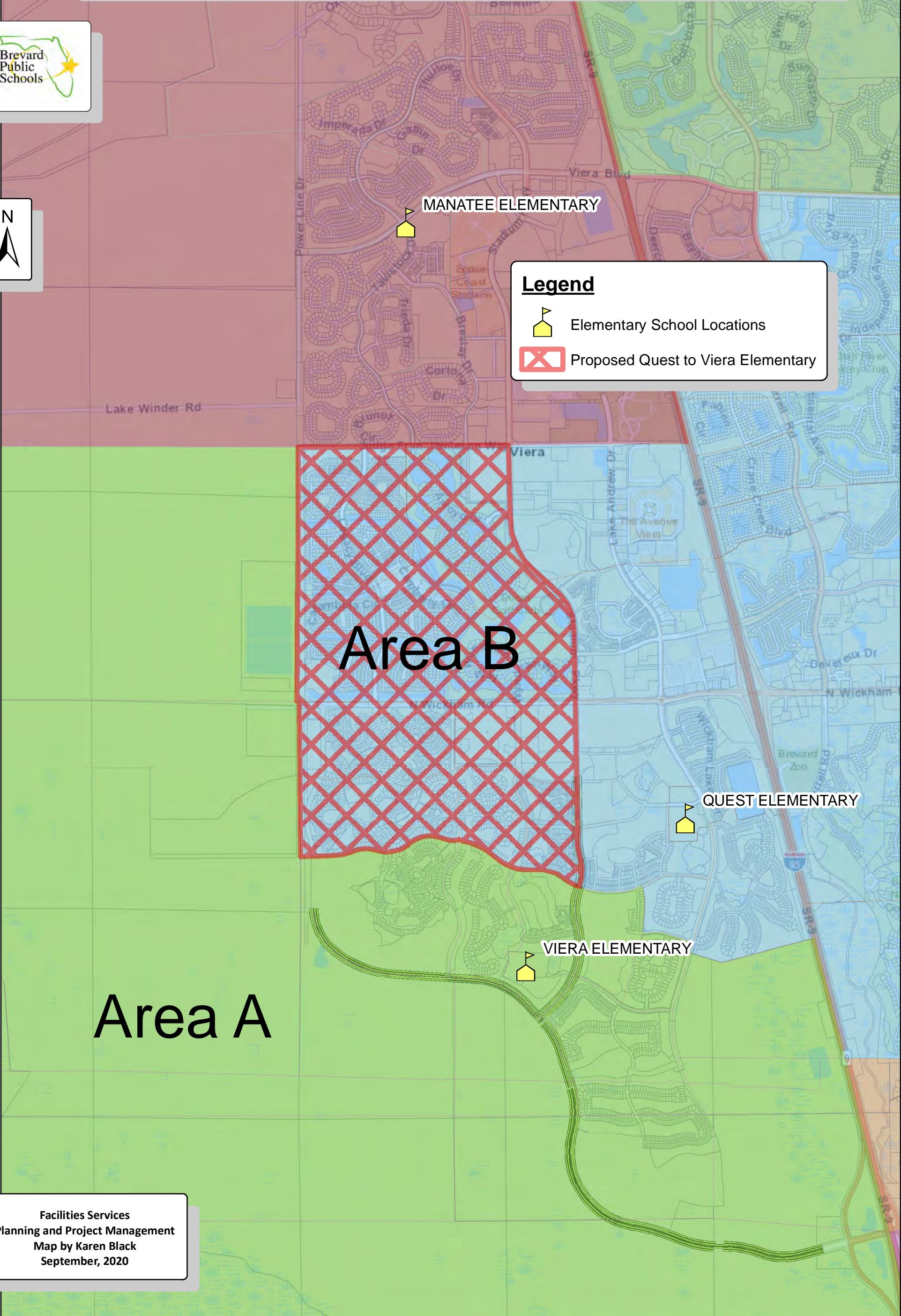
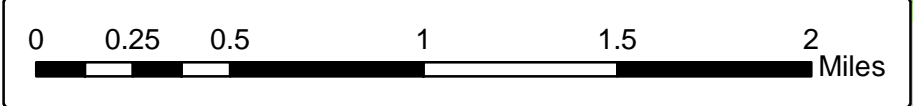
**Legend**

-  Elementary School Locations
-  Proposed Quest to Viera Elementary

**Area B**

**Area A**

Facilities Services  
Planning and Project Management  
Map by Karen Black  
September, 2020





# Traditional Method Attendance Boundary For New Viera Area Elementary

## EXISTING 2020-2021

10/9/2020

School Name	Total Factored Capacity	Current Students	Current Utilization	Current Students	Current Utilization	Asian	African-American	Hispanic	American Indian	Multi-Ethnic	Pacific Islander	Caucasian	F & R Lunch	
Viera Elem	1012	384	37.9%	384	37.9%	19	27	19		39		2	278	81
Quest	1152	795	69.0%	795	69.0%	40	38	57	3	98		559	156	

## EXISTING 2020-2021

10/9/2020

School Name	Total Factored Capacity	Current Students	Current Utilization	Current Students	Current Utilization	Asian	African-American	Hispanic	American Indian	Multi-Ethnic	Pacific Islander	Caucasian	F & R Lunch
Viera Elem	1012	384	37.9%	384	37.9%	4.9%	7.0%	4.9%		10.2%	0.5%	72.4%	21.1%
Quest	1152	795	69.0%	795	69.0%	5.0%	4.8%	7.2%	0.4%	12.3%		70.3%	19.6%

## PROPOSED REDISTRICTING CHANGES

School Name	Total Factored Capacity	Current Students	Current Utilization	New Students	New Utilization	Asian	African-American	Hispanic	American Indian	Multi-Ethnic	Pacific Islander	Caucasian	F & R Lunch
Viera Elem	1012	384	37.9%	127	50.5%	9	9	10		10		89	20
Quest	1152	795	69.0%	-127	58.0%	-9	-9	-10		-10		-89	-20

## PROPOSED REDISTRICTING CHANGES

%

School Name	Total Factored Capacity	Current Students	Current Utilization	New Student Total	New Utilization	Asian	African-American	Hispanic	American Indian	Multi-Ethnic	Pacific Islander	Caucasian	F & R Lunch
Viera Elem	1012	384	37.9%	511	50.5%	5.5%	7.0%	5.7%		9.6%	0.4%	71.8%	19.8%
Quest	1152	795	69.0%	668	58.0%	4.6%	4.3%	7.0%	0.4%	13.2%		70.4%	20.4%
BPS Totals						2.7%	14.9%	11.7%	0.3%	8.7%	0.2%	61.5%	51.9%
BPS + Charters Totals						2.6%	15.2%	11.8%	0.3%	8.8%	0.2%	61.2%	50.4%

## DIFFERENCES FROM PROPOSED CHANGES



School Name	Total Factored Capacity	Current Students	Current Utilization	New Student Total	New Utilization	Asian	African-American	Hispanic	American Indian	Multi-Ethnic	Pacific Islander	Caucasian	F & R Lunch
Viera Elem	1012	384	37.9%	511	50.5%	0.5%	0.0%	0.7%		-0.6%	-0.1%	-0.6%	-1.3%
Quest	1152	795	69.0%	668	58.0%	-0.4%	-0.4%	-0.1%	0.1%	0.8%		0.0%	0.7%
BPS Totals						2.7%	14.9%	11.7%	0.3%	8.7%	0.2%	61.5%	51.9%
BPS + Charters Totals						2.6%	15.2%	11.8%	0.3%	8.8%	0.2%	61.2%	50.4%

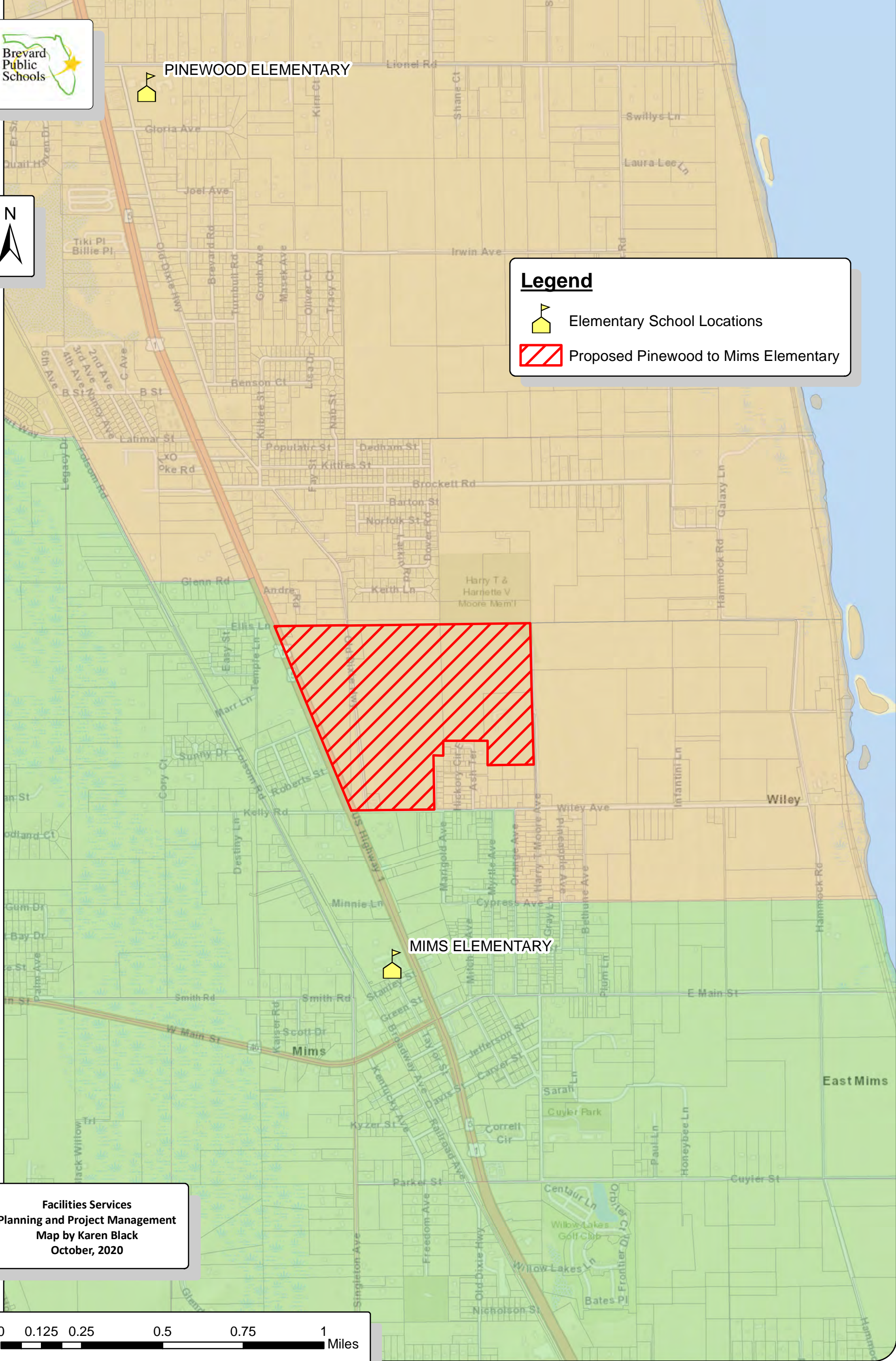


# Proposed Attendance Boundary Change Pinewood to Mims Elementary

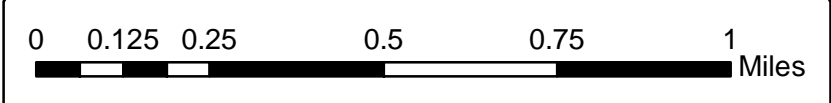


**Legend**

-  Elementary School Locations
-  Proposed Pinewood to Mims Elementary



Facilities Services  
Planning and Project Management  
Map by Karen Black  
October, 2020





# Potential Redistricting Scenario From Pinewood to Mims

## EXISTING 2020-2021

10/9/2020

School Name	Total Factored Capacity	Current Students	Current Utilization	Current Students	Current Utilization	Asian	African-American	Hispanic	American Indian	Multi-Ethnic	Pacific Islander	Caucasian	F & R Lunch
Mims	725	389	53.7%	389	53.7%	1	106	24	1	34	1	222	336
Pinewood	569	470	82.6%	470	82.6%	2	19	9	2	28	1	409	303

## EXISTING 2020-2021

10/9/2020

School Name	Total Factored Capacity	Current Students	Current Utilization	Current Students	Current Utilization	Asian	African-American	Hispanic	American Indian	Multi-Ethnic	Pacific Islander	Caucasian	F & R Lunch
Mims	725	384	53.0%	384	53.0%	0.3%	27.2%	6.2%	0.3%	8.7%	0.3%	57.1%	86.4%
Pinewood	569	470	82.6%	470	82.6%	0.4%	4.0%	1.9%	0.4%	6.0%	0.2%	87.0%	64.5%

This potential boundary change does not affect the current demographics of either Mims or Pinewood Elementary Schools. Currently, two students live within the proposed area. One of these students already attends Mims, while the other is a PK ESE student. The intent of this proposal is to proactively redistrict undeveloped land prior to a proposed development of 440 single family homes is constructed.