

# School Board of Brevard County

2700 Judge Fran Jamieson Way • Viera, FL 32940-6699  
Dr. Mark W. Mullins, Ed.D., Superintendent



August 17, 2022

Mr. John Scott, Director  
Brevard County Emergency Management  
176 Cedar Street  
Rockledge, Florida 32955

**RE: Exemption from Enhanced Hurricane Protection Area (EHPA) Requirements  
New Middle School Next to Viera High School**

Dear Mr. Scott,

The School District is under contract to design a new middle school in central Brevard County on a parcel of land next to Viera High School. The design is based on a prototype design by Schenkel Shultz Architecture similar to Harmony Middle School in Osceola County.

Per our conversations, Brevard County Emergency Management would like to use portions of the new middle school (see attached) for law enforcement and other public sector employees engaged in an emergency event. Currently those employees are slated for Viera High School and when the new middle school opens, Viera High School could then be used for an overflow EHPA shelter.

The new middle school is being designed as a Risk Category III building meeting 156 mph wind speed. Additionally, emergency generator connections will be designed and can be implemented in the case where a portable generator would be needed.

At your request, the gym design criteria will exceed Risk Category III for some critical aspects such as windows, doors and roof span. The development of the design specifications for the gym will be a collaborative effort between the District's design team and Brevard County Emergency Management.

Sincerely,

Susan Hann, P.E., AICP  
Assistant Superintendent Facilities Management Services

*John Scott*

Approved: John Scott, Director

8-19-22

Date

Susan Hann, P.E., AICP  
Assistant Superintendent Facilities Management Services  
Phone: (321) 633-1000 x11450 • FAX: (321) 633-4646



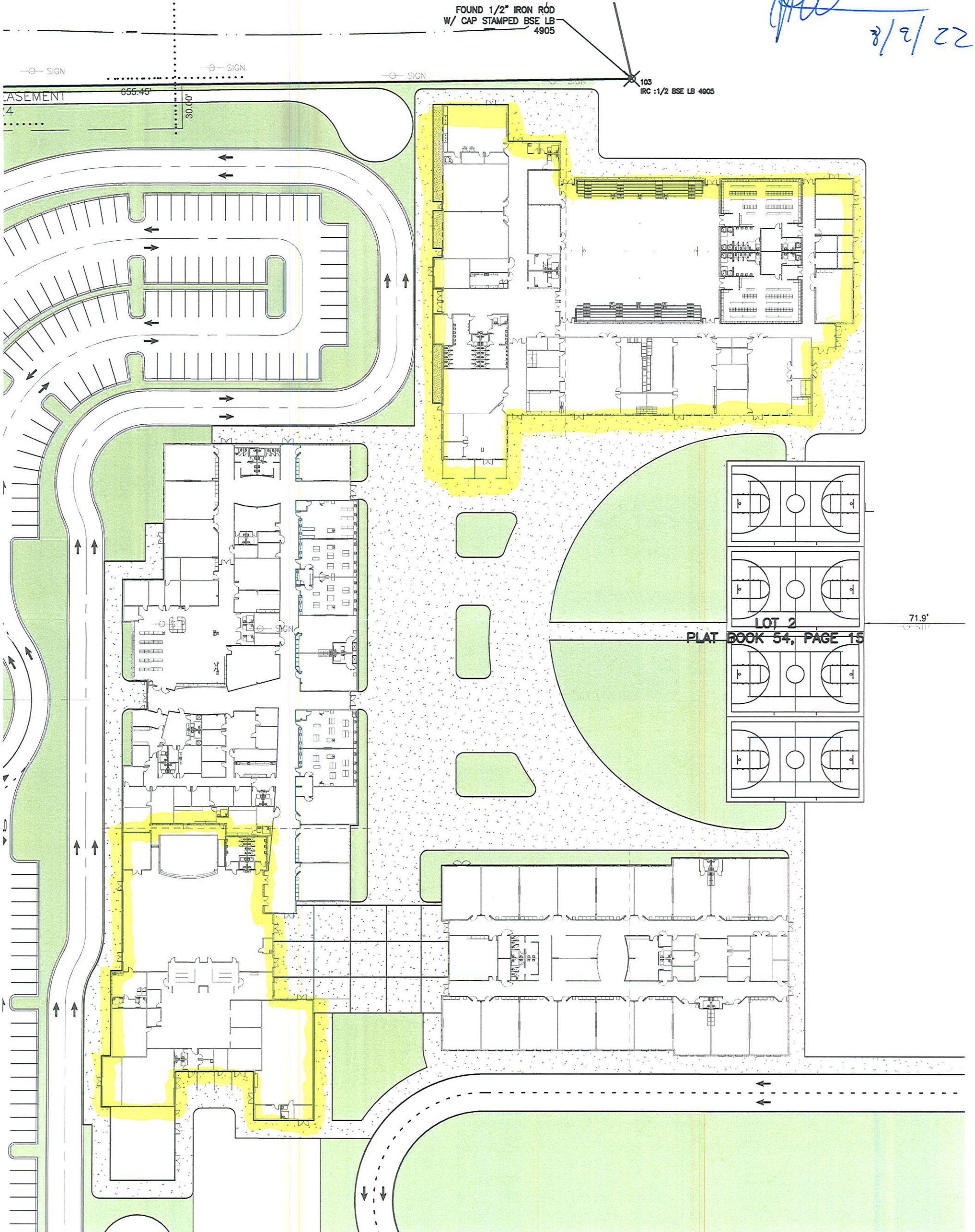
An Equal Opportunity Employer

Approved  
John Scott  
*[Signature]*

2/2/22

FOUND 1/2" IRON ROD  
W/ CAP STAMPED BSE LB  
4905

103  
IRC : 1/2 BSE LB 4905



—○— SIGN      —○— SIGN

BASEMENT  
4  
655.45'  
30.00'

—○— SIGN

71.9'  
—○— SIGN

PLAT BOOK 54, PAGE 15

LOT 2