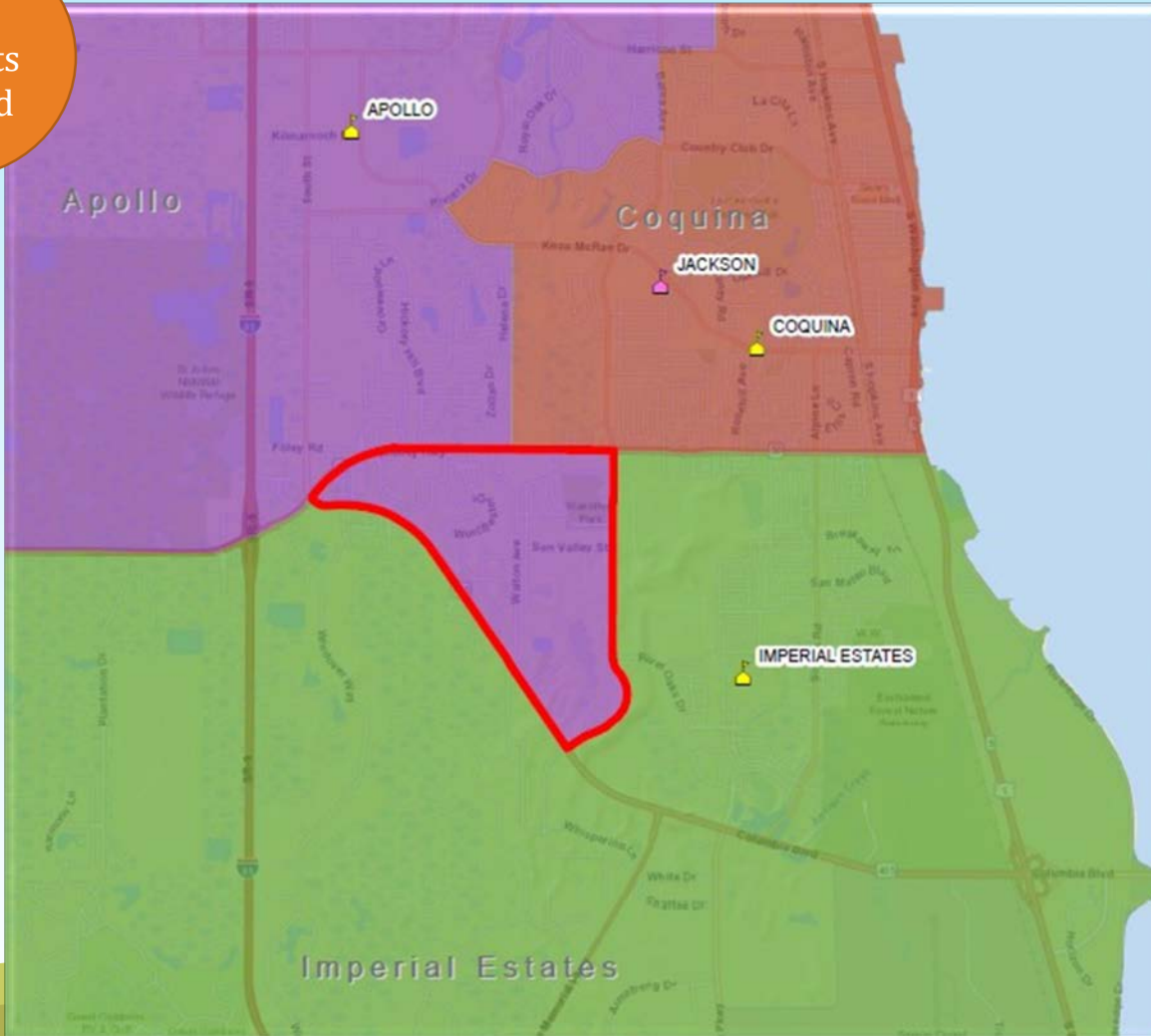


Apollo to Imperial Estates Elementary School

SY 2023-24

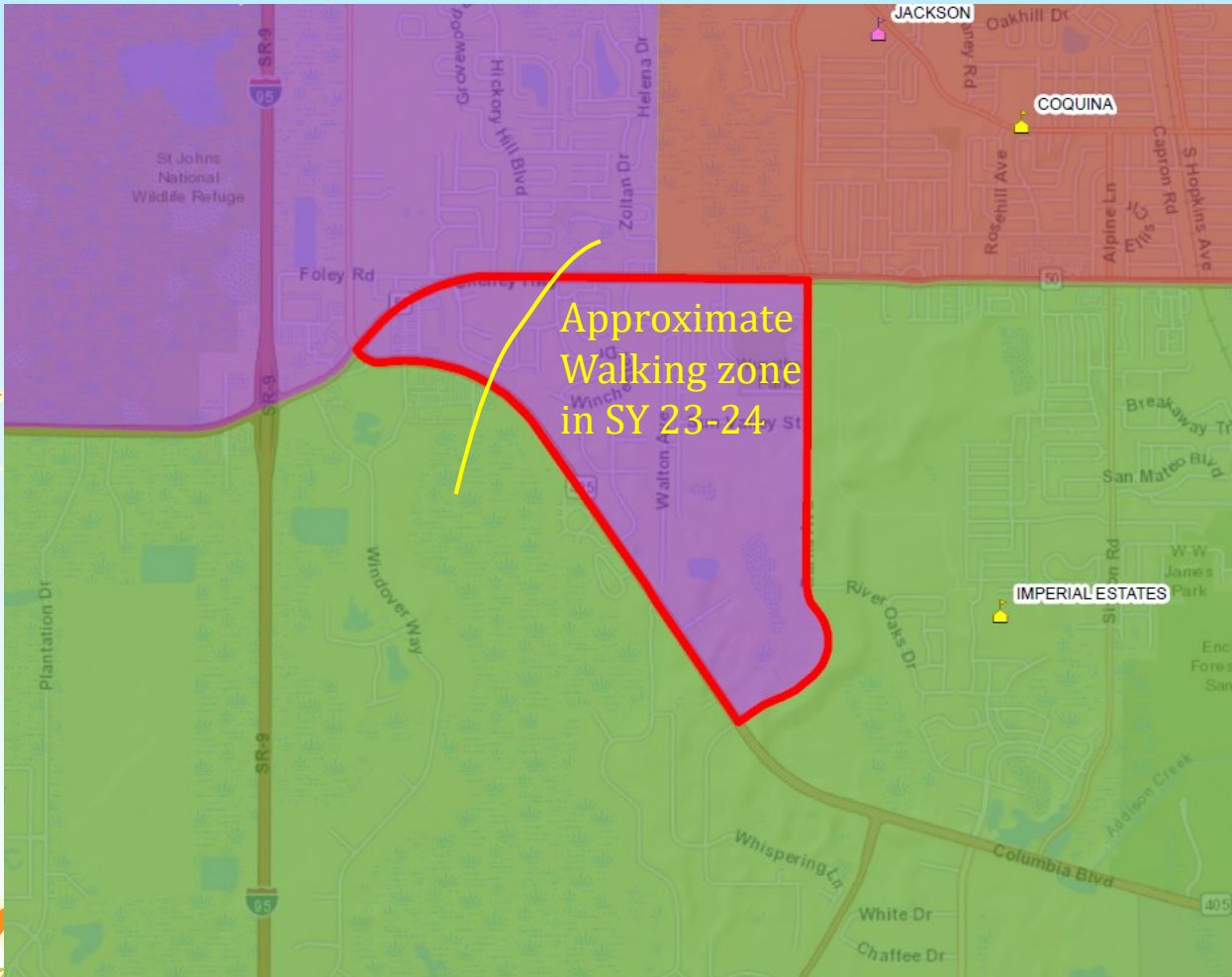
52
students
affected



Area south of Cheney Highway and west of Barna Avenue

- SY 2022-2023
 - Remains zoned for Apollo
 - ELO to Imperial Estates (no fee)
 - Communication to parents
 - New students zoned for Apollo but encouraged to ELO to Imperial
- SY 2023-2024
 - Implement rezoning
 - Special Consideration
 - Rising 6th graders
- Modify registration and school zone software to ensure staff/parents are aware of change

Apollo to Imperial Estates Elementary School



- SY22-23
 - Bussing to Apollo only
 - ELO to Imperial (no fee), walk or parent transport
- SY23-24
 - Bussing to Imperial Estates only
 - About ½ can walk
 - Doesn't reduce number of busses – just riders
 - ELO to stay at Apollo (\$30 fee) – no transportation

[SchoolSite Locator Map link](#)

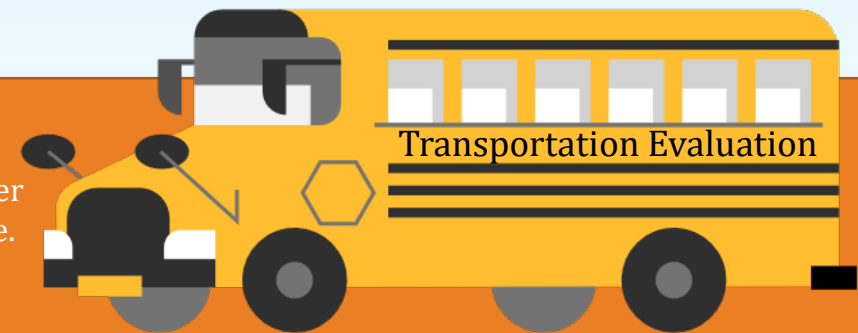
Apollo to Imperial Estates Elementary School

- 52 students affected
- Waive \$30 fee for Apollo families **in the area to be rezoned** that choose to ELO to Imperial Estates in SY 22-23.

School	Current Students	Current Utilization	Proposed Students	Proposed Utilization
Apollo	782	86.7%	730	80.9%
Imperial Estates	624	85.6%	676	92.7%

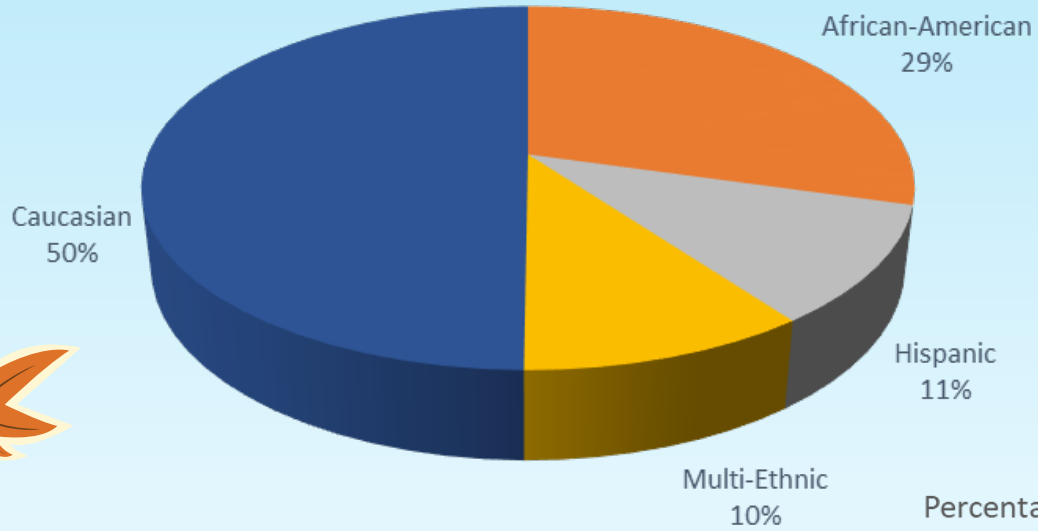
Based on SY2021-22, Survey II student information downloaded data, dated 10-15-2021

- This proposal increases the number of students within a 2-mile walking radius.
- One bus can accommodate all the students.
- No cross walks on Barna Avenue at River Oaks Dr. or Sun Valley St.; however, neither crossing meets the criteria to be a hazard for crossing an uncontrolled crossing site.
- The proposal decreases the number of riders, but not the number of buses used.
- This scenario has no effect on bus rides over 45 minutes.

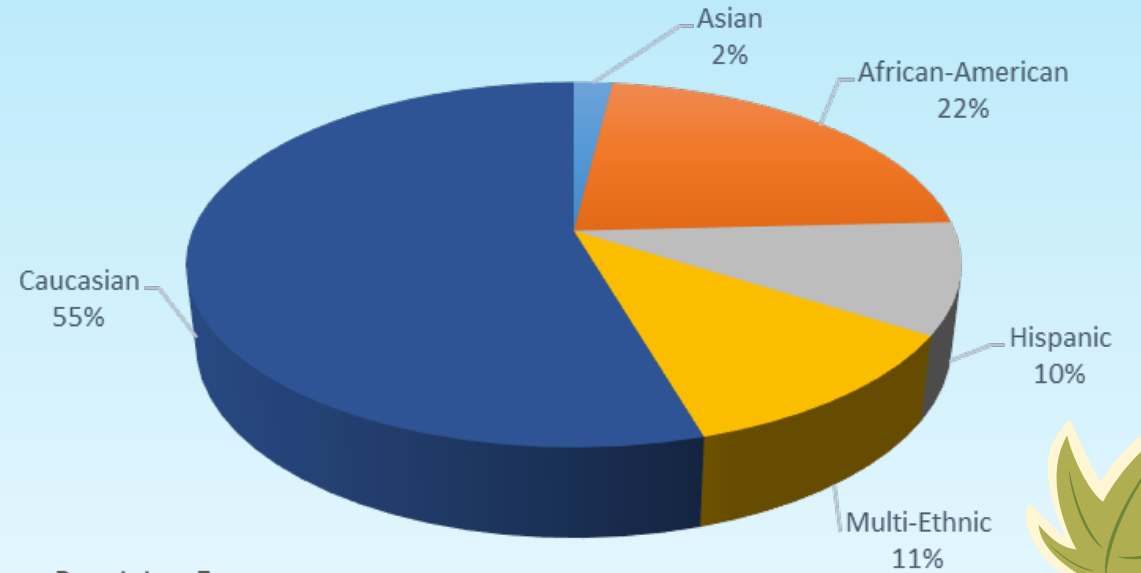


Apollo to Imperial Estates Elementary School

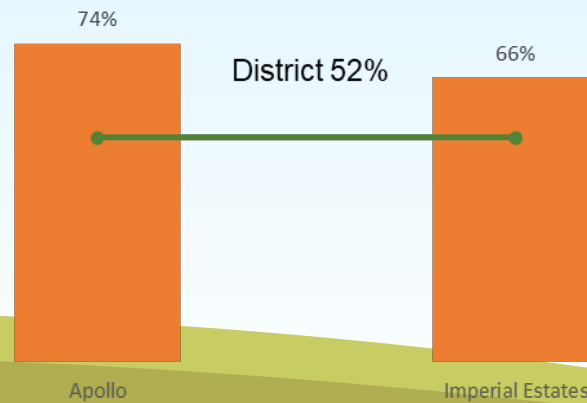
Apollo



Imperial Estates



Percentage of Students Receiving Free or Reduced Lunch



Post-redistricting demographics

Apollo Elementary to Imperial Estates Elementary School

✓ Public Engagement

- Attendance Boundary Change webpage explaining process and timeline
- Virtual community meeting
- Affected local governments
- Letters to affected families

✓ Special Consideration

- No fee for ELO to Imperial Estates for SY22-23
- Rising 6th graders for SY23-24 (current 4th graders at Apollo)