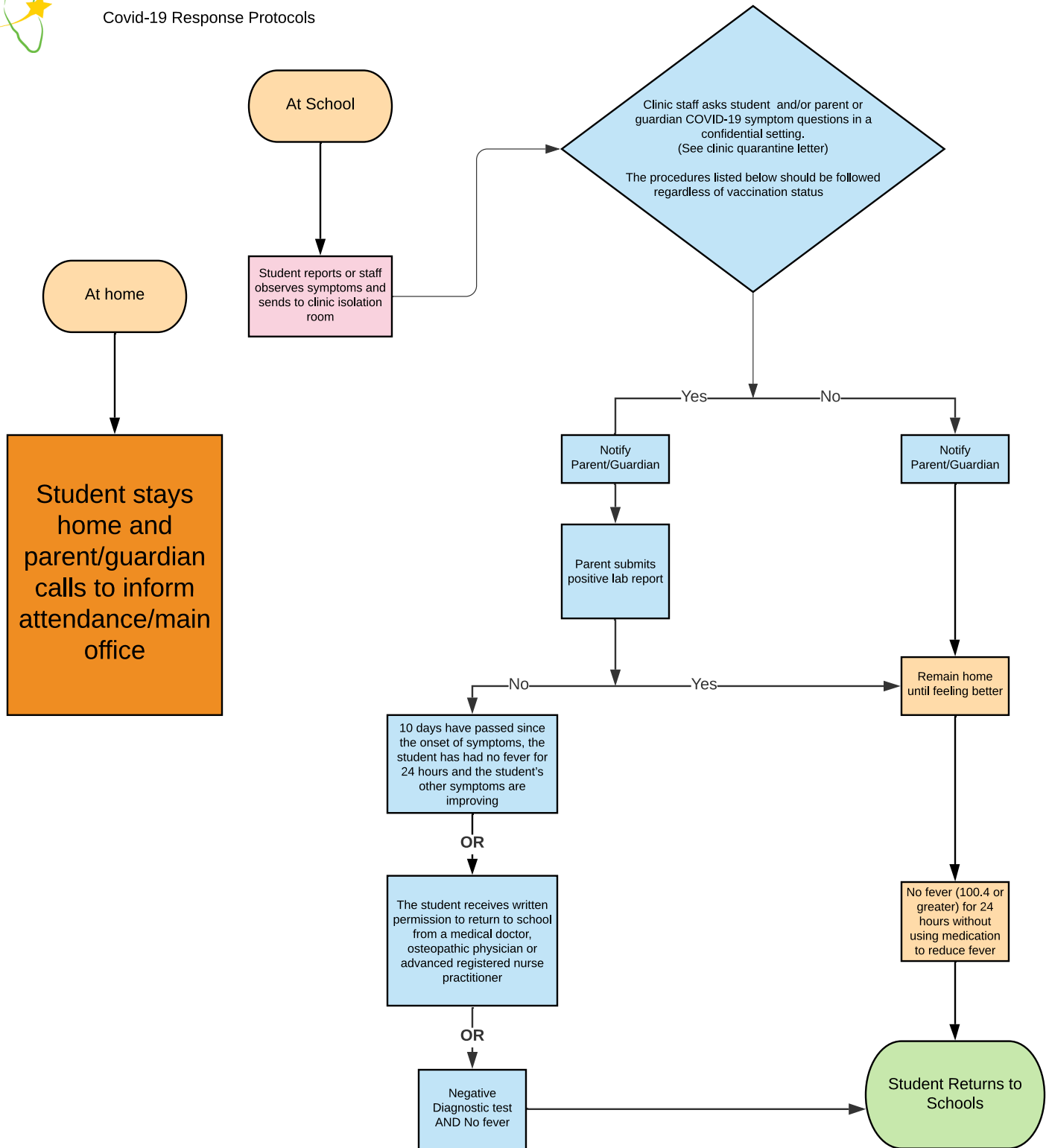




Student Feels Sick

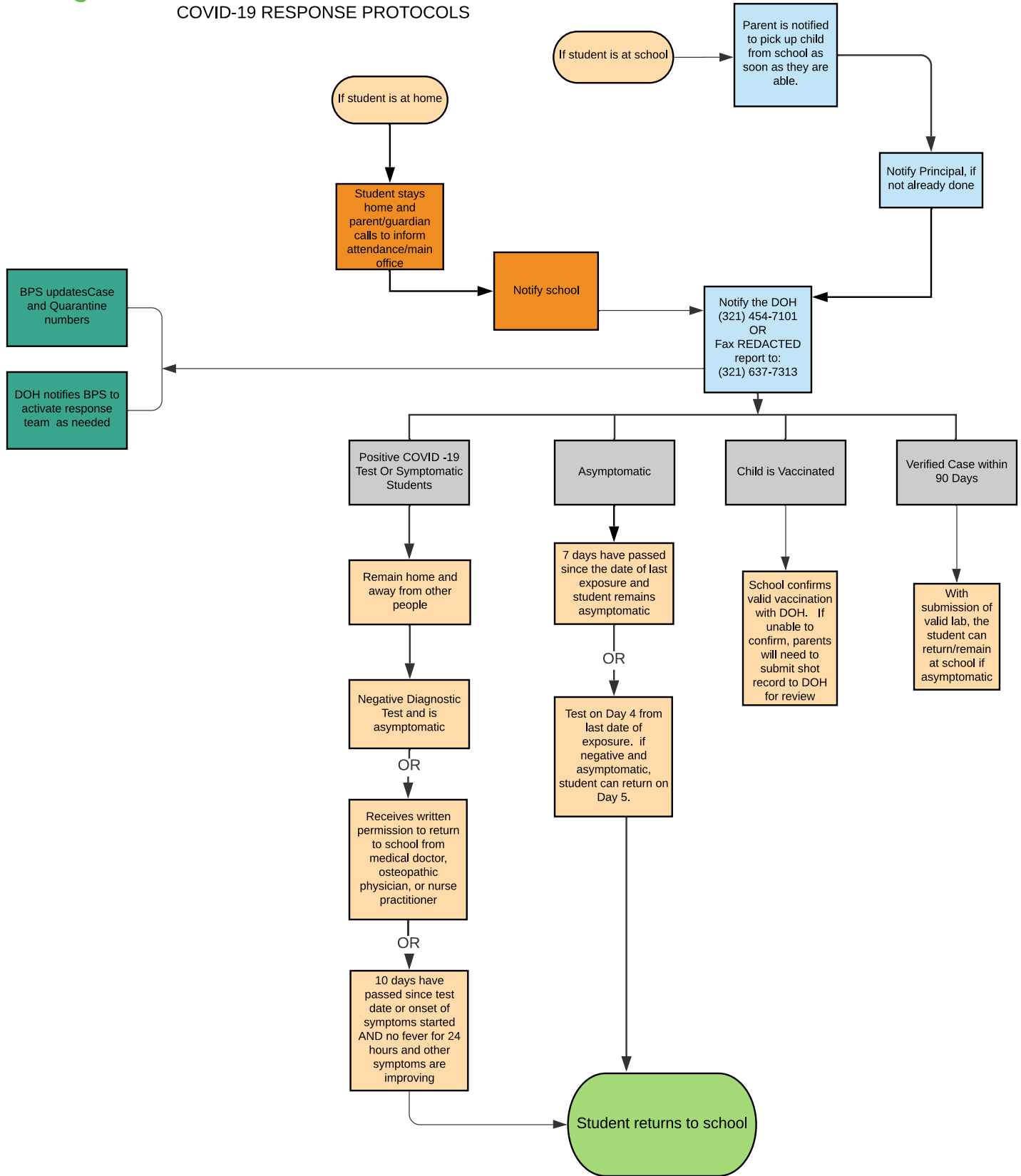
Covid-19 Response Protocols





STUDENT CLOSE CONTACT WITH CONFIRMED COVID-19 INDIVIDUAL

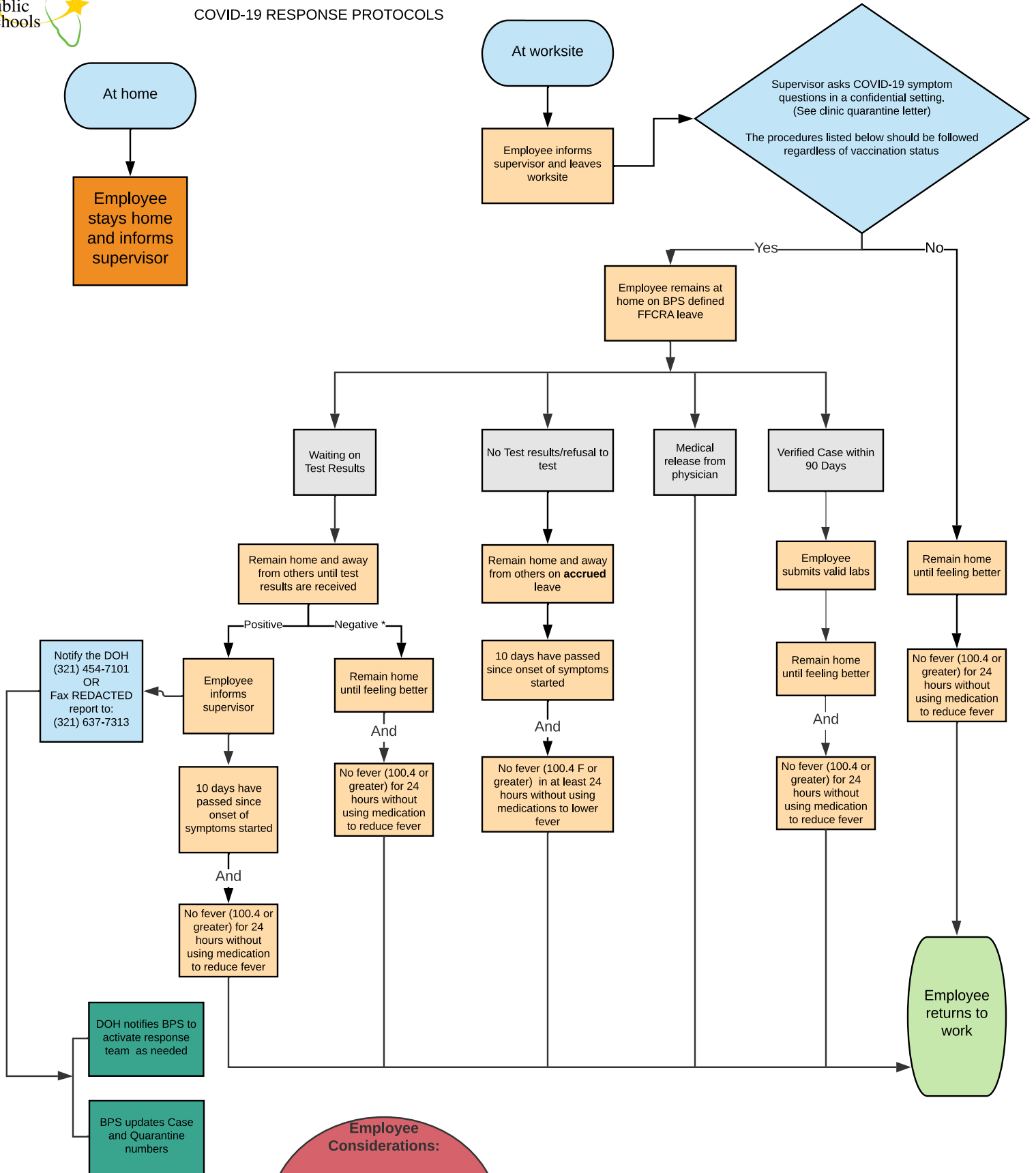
COVID-19 RESPONSE PROTOCOLS





EMPLOYEE FEELS SICK

COVID-19 RESPONSE PROTOCOLS



Employee Considerations:

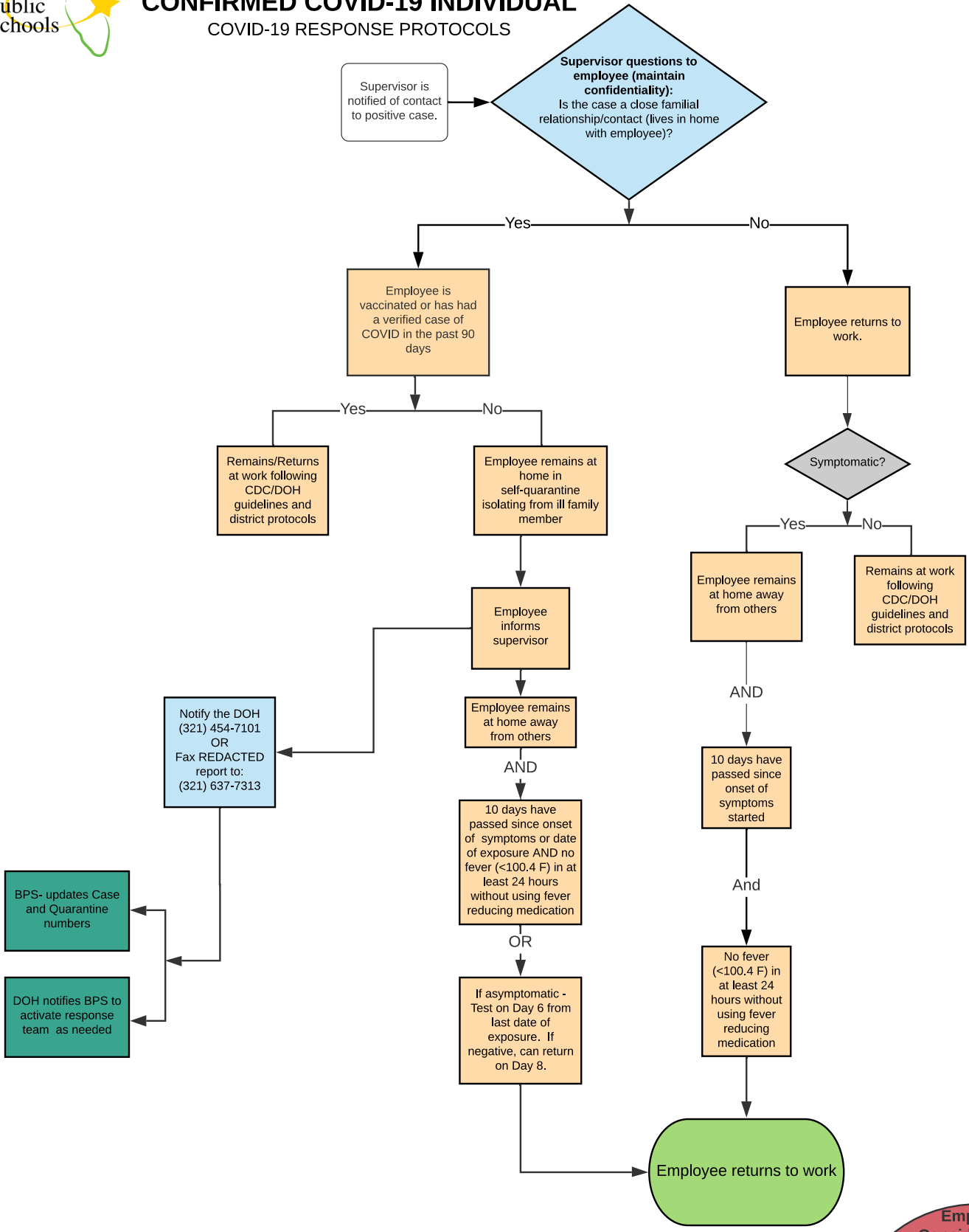
1. Work from home during quarantine allowable, if appropriate
2. See BPS Defined FFCRA Extension of Emergency Sick Leave Flowchart

* For purposes of a negative result, a viral COVID-19 test (PCR or equivalent NAAT molecular test) will be acceptable. Antigen tests may not be used for this purpose.
 **Flowchart cannot account for all potential situations. BPS and Brevard DOH will consult, as needed, for cases not readily determined by this flowchart.
 ***Flowchart is subject to change based on guidance from CDC and FDOH.



EMPLOYEE CLOSE CONTACT WITH CONFIRMED COVID-19 INDIVIDUAL

COVID-19 RESPONSE PROTOCOLS



Employee Considerations:

1. Work from home during quarantine allowable, if appropriate
2. See BPS Defined FFCRA Extension of Emergency Sick Leave Flowchart

* For purposes of a negative result, a viral COVID-19 test (PCR or equivalent NAAT molecular test) will be acceptable. Antigen tests may not be used for this purpose.
 **Flowchart cannot account for all potential situations. BPS and Brevard DOH will consult, as needed, for cases not readily determined by this flowchart.
 ***Flowchart is subject to change based on guidance from CDC and FDOH.